

CARNAHAN · PROCTOR · CROSS, INC.

CONSULTING ENGINEERS · SURVEYORS · PLANNERS
 CERTIFICATE OF AUTHORIZATION NO. LB2936
 6101 WEST ATLANTIC BOULEVARD, MARGATE, FLORIDA 33063
 PHONE: 954-972-3959 FAX: 954-972-4178

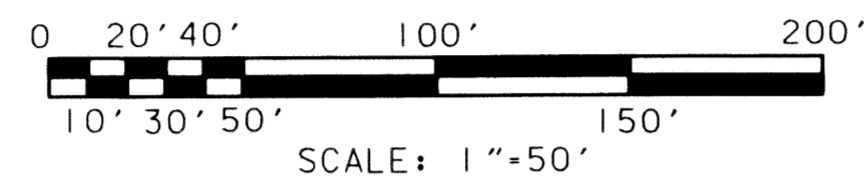
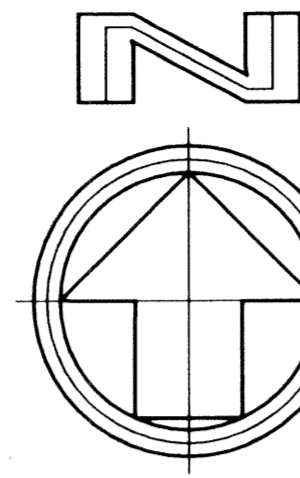
SEPTEMBER 2003

020517

JSH

MAGNOLIA BAY

A REPLAT OF A PORTION OF TRACTS 2, 3, 4, 5, AND THE RIGHT-OF-WAY ADJACENT THERETO, BLOCK 22,
 THE PALM BEACH FARMS COMPANY PLAT NO. 3 (PLAT BOOK 2, PAGE 45, P.B.C.R.) IN SECTION
 22, TOWNSHIP 44 SOUTH, RANGE 42 EAST, CITY OF GREENACRES,
 PALM BEACH COUNTY, FLORIDA.



190

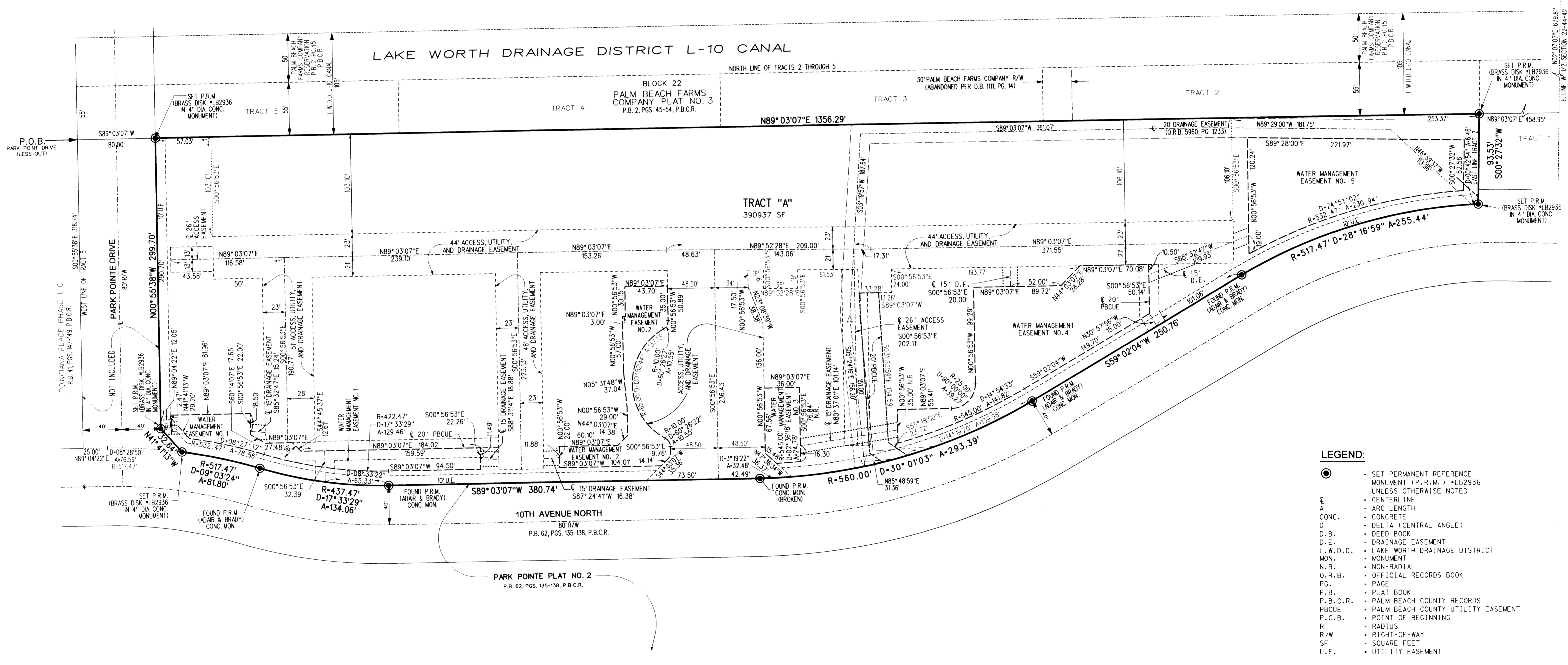
STATE OF FLORIDA

THIS PLAT WAS FILED FOR
 RECORD AT _____
 THIS ____ DAY OF _____
 200__, AND DULY RECORDED
 IN PLAT BOOK ____ ON PAGES
 _____ THROUGH _____
 DOROTHY H. WILKEN, CLERK

By: _____ DC

SHEET 2 OF 2

N. 1/4 CORNER
 SECTION 22-44-42



- LEGEND:**
- SET PERMANENT REFERENCE MONUMENT (P.R.M.) • LB2936 UNLESS OTHERWISE NOTED
 - CENTERLINE
 - ARC LENGTH
 - CONCRETE
 - DELTA (CENTRAL ANGLE)
 - DEED BOOK
 - DRAINAGE EASEMENT
 - LAKE WORTH DRAINAGE DISTRICT
 - MONUMENT
 - NON-RADIAL
 - OFFICIAL RECORDS BOOK
 - PAGE
 - PLAT BOOK
 - PALM BEACH COUNTY RECORDS
 - PALM BEACH COUNTY UTILITY EASEMENT
 - POINT OF BEGINNING
 - RADIUS
 - RIGHT-OF-WAY
 - SQUARE FEET
 - UTILITY EASEMENT

FILE: S:\020517\020517.dwg
 DATE: 11-sep-03 14:13